



BY APPOINTMENT TO
HER MAJESTY THE QUEEN
MANUFACTURERS OF DABLER AND JAGUAR CARS
JAGUAR CARS LIMITED COVENTRY



BY APPOINTMENT TO
HER MAJESTY THE QUEEN
THE QUEEN MOTHER
MANUFACTURERS OF DABLER AND JAGUAR CARS
JAGUAR CARS LIMITED COVENTRY



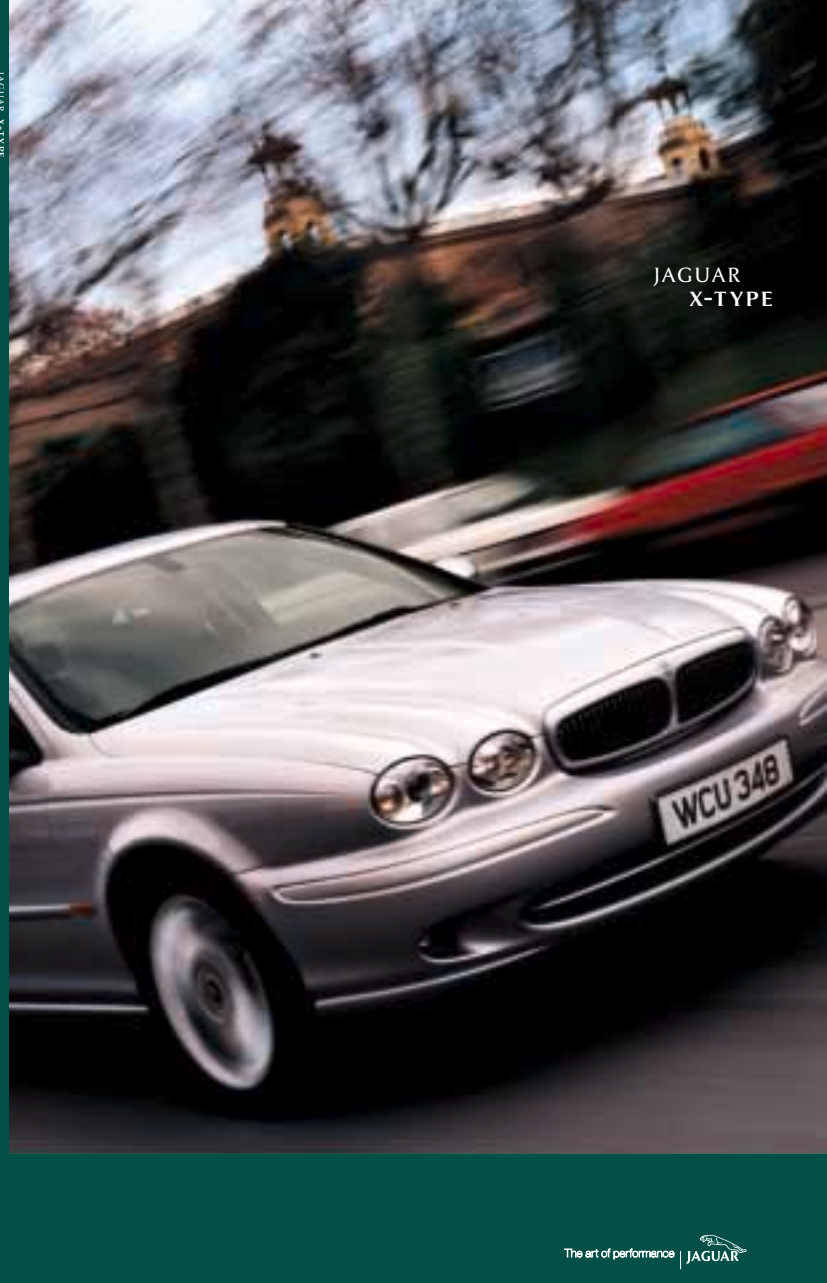
BY APPOINTMENT TO
HER ROYAL HIGHNESS THE PRINCE OF WALES
MANUFACTURERS OF DABLER AND JAGUAR CARS
JAGUAR CARS LIMITED COVENTRY

Jaguar Cars Limited
Browns Lane Allesley
Coventry CV5 9DR England

WWW.JAGUAR.COM

Printed in England.
This brochure is produced using virgin wood fibre
from sawmill residues, forest thinnings and sustainable
forests. Pulp used are Elemental Chlorine Free.

IMPORTANT NOTICE
Jaguar Cars Limited is constantly seeking ways to
improve the specification, design and production of its
vehicles and alterations take place continually.
Whilst every effort is made to produce up to date
literature, this brochure should not be regarded as an
infallible guide to current specifications, nor does it
constitute an offer for the sale of any particular vehicle.
Distributors and dealers are not agents of Jaguar Cars
Limited and have absolutely no authority to bind
Jaguar Cars Limited by any express or implied
undertaking or representation.



JAGUAR
X-TYPE





There's a new face in your life. Young and intriguing. Inviting you to get involved. Full of clever ideas to make your life easier. And so much fun to be with, you could soon be inseparable. X-TYPE.



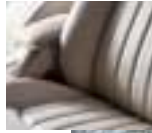
*Please note, cars featured throughout this brochure may be fitted with optional equipment.
Please refer to standard and optional listings for details.*

X-TYPE V6
2 & 2.5 LITRE



The first time you meet, you could discover something familiar, yet very different. A powerful personality - and far more. X-TYPE V6. Looking around you, no other car seems quite so welcoming.

X-TYPE SE
2, 2.5 & 3 LITRE



Such a special place to be. Leather seats that feel as good as they look. The glow of hand-finished maple veneers. X-TYPE SE. Powerful therapy for people who play as hard as they work.



X-TYPE SPORT

2, 2.5 & 3 LITRE

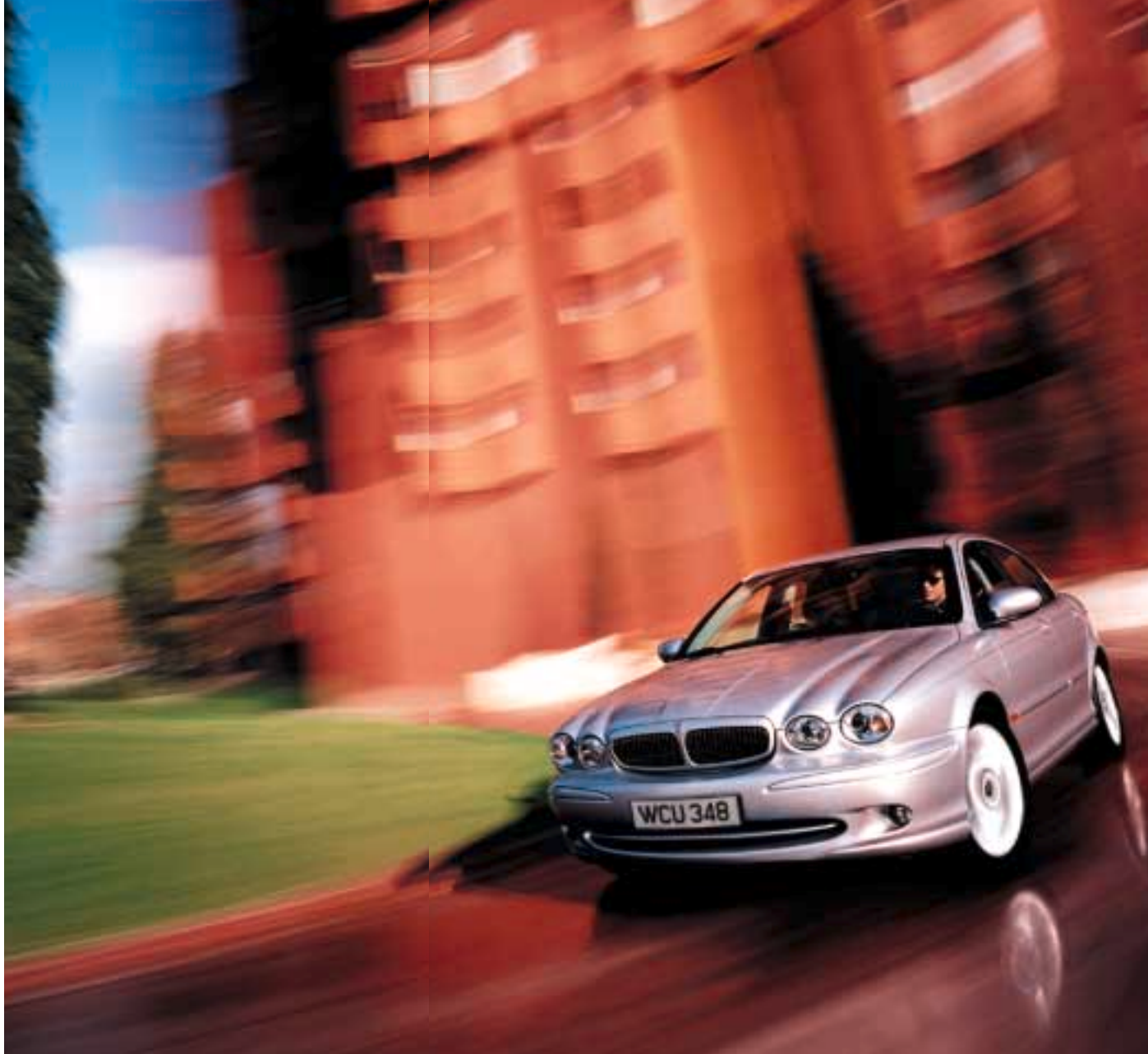


Grey stained, birds eye maple veneer, part leather sport seats, leather trimmed steering wheel and gear knob - the message is clear. X-TYPE Sport. The adrenaline rush is the only reason you need. Just drive it.



JAGUAR V6 ENGINES

It's so quiet, can you really believe the speedometer? The X-TYPE is available with either 2, 2.5 or 3 litre V6 power units. Developed from the S-TYPE's 3 litre V6, the engines are extraordinarily smooth and refined. They share many high performance design features; including 24 valve four cam cylinder heads, variable geometry intake manifolds and continuously variable cam timing.





X-TYPE adapts easily to different situations. There's plenty of room for the unexpected passenger - luggage and all. The large boot swallows up suitcases. The interior provides useful storage space everywhere.















No matter which model you choose, the driving dynamics will always deliver. On Jaguar X-TYPE 2 litre models, the front wheel drive system is complemented by traction control. Should a wheel show any tendency to spin – for example under acceleration on a wet surface – it's instantly braked through the ABS, and power is diverted to the wheel with grip until full traction is restored.

X-TYPE 2.5 and 3 litre models keep their grip with Jaguar Traction[®] permanent all wheel drive. With power split, 40% to the front and 60% to the rear wheels, the result is a sporty, mainly rear wheel drive feel. If the rear wheels momentarily lose traction, more power is immediately directed to the front wheels.

On every model, these safety features act so quickly and smoothly that you'll never notice it happening. So whichever X-TYPE you choose, you can be confident that it's continually watching out for your safety in all weathers. And giving you all the fun you want when it's dry.

JAGUARNET

If you need help or information, you'll get a rapid response from the optional JaguarNet system. You can access JaguarNet manually for all kinds of useful advice - like, where's the nearest good restaurant? In an emergency, help is summoned automatically from a response centre. Linking with satellite navigation to track your location, they'll immediately call the emergency services to your aid.





After a stressful day, it's so easy to get everything as you want it. JaguarVoice lets you set the climate control temperature, select your favourite music or make a phone call with a simple spoken command. Just ask, for example, "CD play track 6".

The X-TYPE's optional navigation system makes getting there and back as easy as a walk in the park. And it does far more. Ever thought how convenient it would be if controls for different functions were all in one place - at your fingertips? The navigation system comes with a touch screen display. To change routes, adjust the interior temperature, switch on the CD or make a phone call - just touch and go. You can set up all your personal preferences by selecting 'user options'. It's as simple, and as clever, as that.



Surround yourself with your own personal rock concert or jazz club and play the journey away. The X-TYPE's audio systems have been acoustically "tuned" to the vehicle interior to give you high performance sound. For convenience, automatic volume control raises the sound output as your speed increases. The optional 180 watt Premium sound system features ten speakers and an active sub-woofer. The choice of a single slot CD player, single slot Mini Disc player, or a CD autochanger ensures concert-hall quality sound. All systems can be easily operated from the multi-function steering wheel, touch screen display or using JaguarVoice commands (where each is fitted).









X-TYPE TECHNICAL SPECIFICATION



ENGINES

AI-V6 2, 2.5 and 3 litre 60 degree, 24-valve V6 with stiff but lightweight aluminium structure and transverse installation. Variable geometry intake manifold and continuously variable cam timing for optimum engine performance.

TRANSMISSIONS

5-speed manual transmission with self-adjusting clutch, and two-mass flywheel for refinement. Optional 5-speed electronic automatic transmission with overdrive 5th and lock up torque converter for fuel efficiency and cruising quietness. Different shift patterns optimise performance under various driving conditions e.g. gradient, cruise control. Both transmissions are maintenance free.

ALL WHEEL DRIVE

Jaguar Traction[®] permanent all wheel drive for optimum roadholding and safety at all speeds and in all weather conditions. Torque split 40% to front wheels, 60% to rear wheels, giving sporty, rear wheel drive feel. Viscous coupling senses differences in wheel speeds front and rear and adjusts torque split momentarily to optimise traction, handling and stability. Available on 2.5 and 3 litre models.

STEERING

Variable-ratio, speed-sensitive steering increases steering feedback and reduces power assistance proportionally with speed, giving excellent straight ahead feel, precision and stability. 2.6 turns lock to lock. Steering column adjustable for tilt and reach. Speed-sensitive steering available on 2.5 and 3 litre models. Variable-ratio steering is standard on all models.

FRONT SUSPENSION

McPherson strut design with twin tube Bilstein dampers. Strut is mounted through a cast iron knuckle and 'zero offset' lower control arm to a steel perimeter frame, which also carries the steering rack and front anti-roll bar. To optimise dynamic performance and refinement, the lower control arm incorporates a hydragrass and the steel perimeter frame has 4 large rubber bushes.

REAR SUSPENSION

Torsion Control Link design allows each rear wheel to react independently, optimising ride refinement and handling. For added refinement, mounting systems isolate rear suspension subframe from body, and final drive unit from subframe. Anti-roll bar. Sport suspension: 10% stiffer springs and dampers, revised steering tune and 17" wheels and tyres provide taut, responsive handling.



BRAKING SYSTEM

Large diameter all wheel disc brakes, ventilated at the front. 4-channel anti-lock braking system with electronic brake distribution for enhanced stability in adverse conditions. Optional Dynamic Stability Control links with anti-lock brakes and steering system to help prevent oversteer or understeer, applying brake force to any required combination of the four wheels.

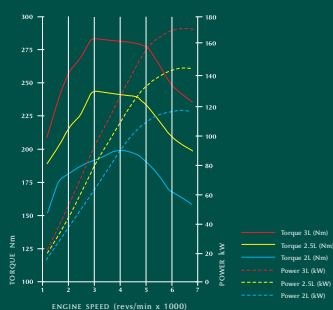
BODY CONSTRUCTION

4-door saloon. All steel monocoque construction with one-piece bodyside for maximum dimensional integrity. High strength steel used in front longitudinal members, seat belt anchorages, suspension mounting points, bumper mountings and door intrusion beams.

PAINT AND PROTECTION

81% (by weight) double sided, zinc coated steel. Four coat paint process; initial primer coat followed by wet-sanding to optimise surface smoothness for second primer and top coats. Primer coat application uses waterborne paint technology, reducing solvent emissions by 85% over traditional paint applications.

POWER AND TORQUE



EXTERIOR FEATURES

Chrome finish grille and badging. Standard on V6 and V6 SE models.



Chrome finish boot plinth with integrated push button. Standard on V6 and V6 SE models.



Chrome finish bumper blades front and rear. Standard on V6 and V6 SE models.



Chrome twin tailpipe finishers. Standard on 2.5 and 3 litre models.



Chrome finish tread plates. Standard on all models.



High-level stop light. Standard on all models.

Foglights integrated into front bumper. Standard on all models.



Body coloured door handles. Standard on all models.



Xenon headlights. Produce twice the light intensity of a standard halogen bulb. Optional on all models.



Body coloured door mirrors. Power adjustment and heated. Standard on all models.



Power mirrors fold back at the touch of a button. Optional on all models.



6.5" x 16" X-7 alloy wheel. Standard on 2 litre models.



6.5" x 16" X-10 alloy wheel. Standard on 2.5 litre models.



6.5" x 16" X-5 alloy wheel. Standard on 3 litre models.



7" x 17" X-Sport alloy wheel. Standard on V6 Sport models.

INTERIOR FEATURES

Birds eye maple veneer fascia.
Standard on V6 and V6 SE models.



Instrument panel with Jaguar racing green dials.
Standard on all models.



Power steering, with manual tilt and reach steering wheel adjustment.
Standard on all models.



Five-speed manual transmission.
Standard on all models.



Five-speed automatic transmission with unique Jaguar J Gate.
Optional on all models.



Air conditioning with pollen filter.
Standard on V6 and V6 Sport models.



Automatic climate control with exterior temperature display and pollen and odour filter.
Standard on V6 SE models.



Chrome finish interior door handle.
Standard on all models.



Front electric windows with one touch open and close and anti-trap.
Standard on all models.



Glove box. Illuminated and lockable.
Standard on all models.



Light panel includes courtesy and two map lights.
Standard on all models.



All lighting functions are conveniently located in one area.
Standard on all models.



Fully trimmed boot, with low loading height.
Standard on all models.

Footwell mats.
Optional on all models.



Boot illumination.
Standard on all models.



On-board trip computer and message centre. Displays travel and safety information.
Standard on V6 SE models.



Manual rear sunblind.
Optional on all models.



Birds eye maple door trims.
Standard on V6 SE models.

SEATING

Leather seats.
Standard on
V6 SE models.



Eight-way
electrically-adjustable
front seats.
Standard on
V6 SE models.*



Drivers seat
electric height rise.
Standard on all models.



Ten-way electrically-adjustable
front seats including
lumbar support.
Optional on all models.

Front stowage compartment.
Standard on V6
and V6 Sport models.



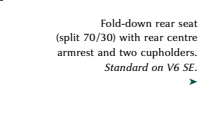
Sliding front arm
rest with stowage.
Standard on
V6 SE models.



Stowage pockets on the
back of front seats.
Standard on all models.



Three adjustable
rear head restraints.
Standard on all models.



Fold-down rear seat
(split 70/30) with rear centre
armrest and two cupholders.
Standard on V6 SE.



Rear centre armrest
and two cupholders.
Standard on V6 SE.



Ski hatch and rear armrest.
Clean and safe transport
of skiing equipment.
Optional on all models.



*Sport seat is 4-way electrically-adjustable on drivers side (recline, height rise), 2-way electrically-adjustable passenger (recline).

LUXURY AND CONVENIENCE

JaguarVoice activation of
audio, telephone, automatic
climate control and some
navigation features.
Optional on all models.



Steering wheel
mounted telephone
and cruise controls.
Standard on V6 SE
models.



TV tuner.
Only available with
navigation system.
Optional on all models.



On-board navigation
guides you accurately to
your destination.
Optional on all models.



Touch screen incorporating
controls for audio, automatic
climate control and telephone (if fitted).
Only available with
navigation system.
Optional on all models.



Jaguar fixed dual band telephone.
Optional on all models.



JaguarNet.
Personal assistance from the Jaguar
Response Centre is only a call away.
Optional on all models.

Remote controlled
garage door opener.
Optional on all models.



Wood and leather steering wheel.
Optional on all models.
Not available in grey stained, birds
eye maple.



Electric tilt and slide glass
sunroof with anti-trap.
Optional on all models.



Illuminated driver and
passenger vanity mirrors.
Standard on all models.

Reverse park control.
An audible beep indicates the
distance between the rear
bumper and any obstacles.
Optional on all models.



IN CAR ENTERTAINMENT

Stereo cassette sound system with EON RDS, PTY, TA and automatic volume control.
Standard on all models.



Four twin-cone speaker system.
Standard on all models.



Single slot Mini Disc player.
Optional on all models.



▲ Single slot CD player
Optional on all models.

Premium sound system with ten speakers, active sub-woofer and a choice of single slot CD player, single slot Mini Disc player or CD autochanger.
Optional on all models.



6-disc CD autochanger (mounted in the boot).
Optional on all models.



▲ Chrome speaker surrounds.
Standard on V6 SE models.

Steering wheel mounted audio controls.
Standard on V6 SE models.



▲ JaguarVoice. Controls audio functions verbally.
Optional on all models.



SAFETY AND SECURITY



Side airbags for driver and front passenger.
Standard on all models.

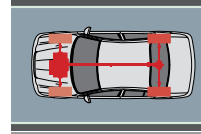


Seat belt pre-tensioners.
Standard on all models.

Side curtain airbags for front and rear occupants.
Standard on all models.



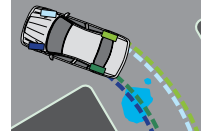
Dual-stage driver and front passenger frontal airbags. Driver's seat track position and front passenger weight sensors.
Standard on all models.



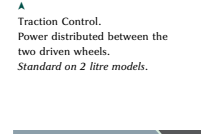
▲ Jaguar Traction®. Permanent all-wheel drive, with 40% power to front wheels and 60% power to the rear wheels.
Standard on 2.5 and 3 litre models.



Anti-lock Braking System (ABS). The system is four-channel and incorporates electronic brake-force distribution (EBD).
Standard on all models.



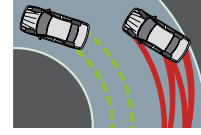
▲ Remote central double-locking. Key can be used to remotely unlock drivers door only, all doors, boot lid or raise panic alarm.
Standard on all models.



▲ Traction Control. Power distributed between the two driven wheels.
Standard on 2 litre models.



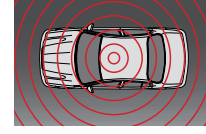
Rain-sensing wipers. Automatically turns on the wipers and adjusts their speed as required.
Optional on all models as part of Auto Clear View pack.



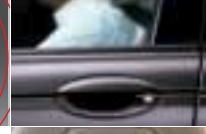
▲ Dynamic Stability Control (DSC). Constantly monitors and controls each wheel in order to maintain well-balanced handling.
Optional on all models.



Automatic headlights. Automatic light sensor turns on side lights and dipped beam when required.
Optional on all models as part of Auto Clear View pack.



▲ Car alarm including engine immobilisation.
Standard on all models.



Drive away locking. All doors lock automatically as the car starts to move.
Standard on all models.



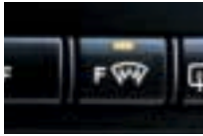
Intrusion-sensing. Ultrasonic sensors detect movement within the cabin.
Standard on all models.

PACKS

SPORT MODELS

COLD CLIMATE PACK
OPTIONAL ON ALL MODELS

Heated front
windscreen. >



Heated front seats.
Two stage variable. ▼



Headlight
powerwash. ▼



COLD CLIMATE XENON PACK
AS COLD CLIMATE PACK BUT ALSO INCLUDES XENON HEADLIGHTS
OPTIONAL ON ALL MODELS

Xenon headlights.
Produce twice the light intensity of a
standard halogen bulb. >



AUTO CLEAR VIEW PACK
OPTIONAL ON ALL MODELS

Rain-sensing wipers.
Automatically turns
on the wipers and
adjusts their speed
as required. >



▲
Electrochromic rear-view mirror.
Automatically dims when
required.



▲
Automatic headlights.
Automatic light sensor turns
on side lights and dipped
beam when required.

JAGUARVOICE ACTIVATION AND CRUISE CONTROL PACK
OPTIONAL ON V6 AND SPORT MODELS

JaguarVoice activation,
cruise control, trip
computer with message
centre and steering
wheel audio and
telephone controls. >



**REAR SEAT
CONVENIENCE PACK**
OPTIONAL ON V6 MODELS

Rear centre armrest
and two cupholders. >



▲
Ski hatch.
Clean and safe transport of
skiing equipment.



▲
Fold-down rear seat (split 70/30).



▲
Body coloured grille surround
with grey grille vanes.



Body coloured
bumper blades. <



Body coloured boot plinth
and rear spoiler. <

7" x 17" X-Sport
alloy wheels. >



▲
De-chromed window surrounds.



Cloth/leather sport seats.
<

Grey stained, birds eye
maple veneer facia.
*(Standard maple veneer is
a no cost option).* >



Perforated leather
sport gearknob
(manual transmission). >



▲
Grey stained, birds eye
maple gearknob
(optional automatic transmission).



▲
Perforated leather
sport steering wheel.



▲
Sport suspension.

STANDARD AND OPTIONAL EQUIPMENT

	V6 2 / 2.5	V6 SE 2 / 2.5 / 3	SPORT 2 / 2.5 / 3
TRANSMISSION/SUSPENSION			
Cruise control	○	■	○
Drivetrain:	- Jaguar Traction [®] (Full-time All-Wheel Drive)	□ / ■	□ / ■ / ■
	- Traction Control (Front Wheel Drive)	■ / □	■ / □ / □
Suspension:	- touring	■	■
	- sport	□	□
Transmission:	- 5-speed manual with moulded gearknob	■	□
	- 5-speed manual with leather gearknob	○	■
	- 5-speed electronic automatic with wooden gearknob to match veneer	□	○
EXTERIOR			
Chrome finish grille surround, boot plinth, bumper blades and window surrounds	■	■	□
Body coloured grille surround, boot plinth, bumper blades and de-chromed window surrounds	□	□	■
Door handles	- body coloured	■	■
Exterior mirrors:	- power-adjustable, heated	■	■
	- power fold-back	○	○
Garage door opener	○	○	○
Headlights:	- manual headlight levelling	■	■
	- headlight powerwash	○	○
	- xenon headlights with automatic headlight levelling and headlight powerwash	○	○
Heated front windscreen	○	○	○
Heated rear window with timer	■	■	■
Metallic paint	○	○	○
Rear spoiler	□	□	□
Screenwasher nozzles	- heated	■	■
Sunroof	- glass, electric with tilt, slide and anti-trap	○	○
Wheels:	- cast alloy 6.5" x 16" X-7	■ / □	■ / □ / □
	- cast alloy 6.5" x 16" X-10	○ / ■	○ / ■ / ○
	- cast alloy 6.5" x 16" X-5	○	○ / ○ / ■
	- cast alloy 7" x 17" X-Sport	○	○
	- spare full size steel 6.5" x 16"	○	□
	- spare full size alloy Sport 7" x 17"	(○)	(○)
	- spare space saver	■	■
INTERIOR			
Air conditioning:	- manual with pollen filter	□	□
	- automatic climate control with pollen and odour filter and outside temperature display	○	○
Boot fully trimmed	■	■	■
Centre armrest:	- front, with stowage	■	■
	- front, sliding with stowage	○	○
	- rear with 2 cupholders	○	■
Digital clock	■	■	■
Duotone horn	■	■	■
Electric windows with one touch open and close and anti-trap:	- front	○	■
	- rear	○	■
First aid kit	○	○	○
Footwell mats	- carpet, front and rear	○	○
Front puddle lights	□	□	□
Glove compartment	- illuminated, lockable, with stowage net	■	■
Headrests	- adjustable for height and angle	■	■
Lights-on warning	■	■	■
Seats, front:	- manually-adjustable with drivers seat electric height rise (2-way)	○	□
	- sport - manually-adjustable with electric drivers height rise and driver/passenger electric recline (4-way driver/2-way passenger)	□	□
	- 8-way electrically-adjustable driver and passenger seat	○	■
	- 10-way electrically-adjustable front seats (including lumbar support)	○	○
	- heated (2 stage variable)	○	○
Seats, rear:	- fold-down rear seat (split 70/30) with rear centre armrest and 2 cupholders	○	○
	- rear head restraints x 3	■	■
Seats, trim:	- cloth	○	□
	- leather	○	■
	- cloth/leather sport	□	■
	- leather sport (perforated)	□	□
	- ivory leather (only available with leather seats or leather sport seats)	(○)	(○)
Ski hatch	- bag and rear armrest	○	○
Speedometer/rev counter display	- with fuel gauge, coolant gauge and mileage and trip counter	■	■
Steering column	- manually-adjustable for tilt and reach	■	■
Steering wheel:	- leather	■	□
	- sport leather (perforated)	□	□
	- birds eye maple wood and leather steering wheel (Not available in grey stained, birds eye maple)	○	(○)
Storage space	- doors, front and rear	■	■

	V6 2 / 2.5	V6 SE 2 / 2.5 / 3	SPORT 2 / 2.5 / 3
INTERIOR CONTINUED			
Stowage pockets	- back of front seats	■	■
Sunblind	- rear, manual (not available with premium sound system)	○	○
Survivors	- illuminated with vanity mirror, driver and front passenger	■	■
Wood veneer:	- birds eye maple	■	△
	- grey stained, birds eye maple	□	□
	- birds eye maple door trims	□	■
COMMUNICATIONS			
Audio equipment:	- custom stereo cassette sound system with 4 twin-cone speakers, EON RDS, PTY, TA and automatic volume control, CD compatible	■	■
	- single slot CD	○	○
	- single slot Mini Disc	○	○
	- CD autochanger (6-disc capacity)	○	○
	- chrome speaker surrounds	□	■
	- premium sound system with 10 speakers and active sub-woofer (Requires at least one digital audio source from list above)	(○)	(○)
JaguarNet (1)	- only available with fixed dual band telephone	(○)	(○)
JaguarVoice	- audio, telephone and automatic climate control (only available with steering wheel audio and telephone controls and trip computer with message centre)	(○)	(○)
Navigation system (2)	- touch screen incorporating controls for audio, automatic climate control and telephone (if fitted) (only available with automatic climate control)	(○)	(○)
Steering wheel audio and telephone controls	○	■	○
Telephone	- fixed dual band (only available with front, sliding centre armrest)	(○)	(○)
Trip computer	- with message centre	○	■
TV tuner (only available with navigation system)	(○)	(○)	(○)
SAFETY			
Airbags:	- front and side, driver and front passenger	■	■
	- curtain, front and rear	■	■
	- occupancy sensing	■	■
Anti-lock braking system	■	■	■
Brakes:	- disc brakes, front, inner vented	■	■
	- disc brakes, rear	■	■
Dynamic Stability Control	○	○	○
Electrochromic rear-view mirror	○	○	○
Front fog lights	■	■	■
High-level stop light	■	■	■
Impact protection	- provided by wrap around bumpers and side strips	■	■
Power-assisted steering:	- variable-ratio	■	■
	- speed-sensitive	□ / ■	□ / ■ / ■
Reverse park control	○	○	○
Safety bodyshell	- front and rear deformation zones, door reinforcement, bumpers that regenerate to original shape following impacts up to 2.5mph	■	■
Seat belts:	- front inertia-reel seat belts with pyrotechnic belt latch tensioner and belt force limiter	■	■
	- front manual seat belt height adjustment	■	■
	- rear three-point seat belts for all passengers, including third headrest	■	■
Warning triangle	○	○	○
SECURITY			
	- central/double locking and perimeter security system with 2-stage unlock and remote control	■	■
	- inclination-sensing	○	○
	- intrusion-sensing	■	■
OPTIONAL PACKS			
Auto Clear View pack	- rain-sensing wipers, electrochromic rear-view mirror and automatic headlights	○	○
Cold Climate pack	- headlight powerwash, heated front windscreen and heated front seats	○	○
Cold Climate Xenon pack	- headlight powerwash, heated front windscreen, heated front seats and xenon headlights with automatic headlight levelling	○	○
Rear Seat Convenience pack	- ski hatch and fold down rear seat (split 70/30) with rear centre armrest and 2 cup holders	○	□
JaguarVoice and Cruise Control pack	- JaguarVoice, cruise control, trip computer with message centre and steering wheel audio and telephone controls	○	○

NB. Engine size boot badge not available on 2 litre models.

(1) Limited coverage in Northern Ireland, Channel Isles and Isle of Man.

(2) Country mapping DVDs are available for:

Austria, Belgium, Denmark, France, Germany, Italy, Luxembourg, Netherlands, Portugal*, Spain*, Sweden, Switzerland, and the United Kingdom (except Northern Ireland).

Australia
Japan
North America (Canada*).
* limited coverage

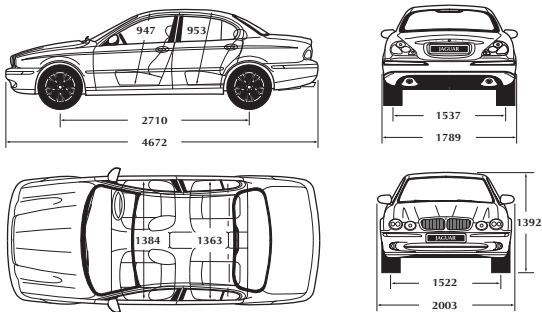
■ Standard
○ Optional at extra cost
△ Optional at no extra cost
□ Not available
(○) Linked option

SPECIFICATIONS V6, SE AND SPORT

ENGINE	V6 2 LITRE		V6 2.5 LITRE		V6 3 LITRE	
Cylinders/valves per cylinder	6/4		6/4		6/4	
Bore/stroke - mm	81.6/66.8		81.6/79.5		89.0/79.5	
Capacity - cc	2099		2495		2967	
Maximum power - DIN bhp (kW)	157 (117)		194 (145)		231 (172)	
EEC PS (kW)	156 (114.6)		196 (144)		231 (169)	
@ rev/min	@ 6800		@ 6800		@ 6800	
Maximum torque - DIN lb.ft. (Nm)	148 (200)		180 (244)		209 (284)	
EEC lb.ft. (Nm)	145 (196)		178 (241)		206 (279)	
@ rev/min	@ 4100		@ 3000		@ 3000	
Compression ratio :1	10.75		10.3		10.5	
Transmission	5-speed manual	5-speed automatic	5-speed manual	5-speed automatic	5-speed manual	5-speed automatic
PERFORMANCE (MANUFACTURER'S ESTIMATES)						
Acceleration 0-60 mph (0-100 km/h) - sec	8.9 (9.4)		10.4 (10.8)		7.9 (8.3)	
Top speed - mph (km/h)	130 (210)		127 (205)		140 (225)	
FUEL CONSUMPTION (1)						
Urban - mpg (l/100km)	22.2 (12.7)		19.8 (14.3)		20.7 (13.6)	
Extra urban - mpg (l/100km)	39.6 (7.1)		37.9 (7.4)		39.0 (7.2)	
Combined - mpg (l/100km)	30.7 (9.2)		28.4 (10.0)		29.5 (9.6)	
Carbon dioxide emissions g/km	219		239		234	
Tank capacity - gals (l) approx. (incl. 5 ltr reserve)	13.5 (61.5)		13.5 (61.5)		13.5 (61.5)	
WEIGHT (2)						
Kerb weight - lb (kg)	3197 (1450)		3274 (1485)		3428 (1555)	
Gross vehicle weight - lb (kg)	4277 (1940)		4354 (1975)		4486 (2035)	
Gross vehicle weight - towing - lb (kg)	4465 (2025)		4542 (2060)		4673 (2120)	
Permitted roof load - lb (kg)	165 (75)		165 (75)		165 (75)	
Permitted trailer load, unbraked - lb (kg)	1654 (750)		1654 (750)		1654 (750)	
Permitted trailer load, braked - lb (kg)	3307 (1500)		3307 (1500)		3307 (1500)	
Permitted towbar download - lb (kg)	132 (60)		132 (60)		132 (60)	
WHEELS/TYRES (3)						
Wheel type	X-7 Alloy - 5 stud 6.5" x 16"		X-10 Alloy - 5 stud 6.5" x 16"		X-5 Alloy - 5 stud 6.5" x 16"	
Tyre size	16" 205/55 R16		16" 205/55 R16		16" 205/55 R16	
Turning circle - ft. (m)	35 ft 7" (10.84)		35 ft 7" (10.84)		35 ft 7" (10.84)	
Boot volume - cu.ft. (VDA l)	16 (452)		16 (452)		16 (452)	

- The fuel economy figures were obtained in tests carried out in line with the Passenger Car Fuel Consumption Amendment Order 1996 (Reflecting EU Directive 1999/100 EEC fuel consumption test cycle). These figures were correct at the time of going to press.
- Please consult your dealer for details of changes associated with option fitment. Kerb weights reflect vehicles to standard specifications. Optional extras increase weight.
- X-Sport 7.0" or 17" alloy wheel available as an option on V6 and SE models and standard on Sport models.

DIMENSIONS



Dimensions shown in mm.

NOTE: The dimension details refer to a nominal car but may vary marginally from car to car due to design and production tolerances. The nominal condition has been used wherever possible. Please consult your dealer for details of changes associated with option fitment.

OWNERSHIP



JAGUAR FINANCIAL SERVICES

Jaguar Financial Services offer a range of finance and insurance plans tailored to provide maximum choice and flexibility. You'll be as impressed with the finance as you are with the car. Your Jaguar dealer will match your personal or business requirements to the most appropriate finance plan, provide you with quotations and process your application.



COMPANY CAR OPT OUT

Because of the proposed changes in company car Benefit in Kind taxation scheduled for April 2002, many company fleet operators and company car drivers are considering their alternatives. Jaguar Financial Services and Jaguar Cars Limited have jointly developed a wide range of finance and insurance plans for business customers and private individuals who may have chosen to opt out of their company car scheme. A combination of Jaguar Privilege PCP, Jaguar Service Contract and Jaguar Insurance provides an excellent package for drivers who have chosen to opt out of a company car scheme. Please contact your Jaguar dealer for further information.

WWW.JAGUAR.COM/UK

Your personal Jaguar journey may begin with a visit to www.jaguar.com/uk. In this virtual world you can build a Jaguar to your specifications by choosing the exterior colour and wheels available and view some of the key features available. The web site also includes such helpful tools as a dealer locator, specifications and price lists, the latest information on all the Jaguar models, information on clubs, and a fascinating look into the passion and legacy that infuse the Jaguar name.



JAGUAR MAGAZINE

Four times a year, you will receive JAGUAR, our quarterly magazine. In this publication, you will read about exotic and exciting drives to take with your Jaguar, stories of other Jaguar owners and their experiences with their cars, highlights on Jaguar's activity in the exciting world of Formula One racing, and the finer things that go hand in hand with a luxury lifestyle.

OWNERSHIP

Your Jaguar comes with Total Care which incorporates 3 year or 60,000 mile Vehicle Warranty, together with a 3 year unlimited mileage Paint Surface Warranty and a 6 year unlimited mileage Corrosion Perforation Warranty. Also included in Total Care is the support of 24 hour Roadside and Emergency Assistance, including onward travel and hotel accommodation in the UK. Jaguar European emergency assistance affords you similar cover should you be travelling in Continental Europe. Furthermore, optional extended warranties are available so allowing you to extend the 3 year/60,000 mile warranty cover for a further 12, 24 or 36 months (years 4, 5 and 6) to 100,000 miles total vehicle mileage.

COLOUR AND TRIM

The interior theme adopts an upper and lower environment contrast colour split. Please consult your dealer for further colour/trim information. To examine the actual quality of Jaguar upholstery materials please consult your Jaguar dealer's colour and upholstery guide.

For full details of available colour/trim combinations and extra costs for upholstery materials (where applicable), please consult your dealer and the current Price List.

CLOTH



LEATHER



SPORT CLOTH/LEATHER



SPORT LEATHER

